



NEXT GENERATION CAT MINI EXCAVATORS LINE UP

[LEARN MORE](#)

EXCAVATORS

308 CR

[< Back](#)

[REQUEST A QUOTE](#)

0% FOR 60 MONTHS* WITH A 2-YEAR WARRANTY**

[OFFER DETAILS](#)

[Calculate my Payment](#)

[FIND A DEALER](#)

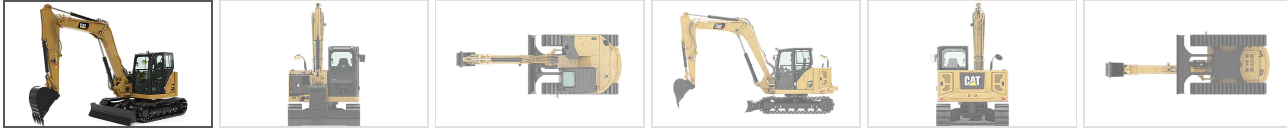
[USED MINI EXCAVATORS](#)

[VIEW PRODUCT DOWNLOADS](#)



308 CR Mini Hydraulic Excavator

PHOTO 360 VIEW



1 of 2

BENEFITS & FEATURES

EQUIPMENT

RELATED PRODUCTS

SPECIFICATIONS

**COMPARE
MODELS**

OVERVIEW

The Cat® 308 CR Mini Excavator delivers maximum power and performance in a mini size to help you work in a wide range of applications.

ENGINE

UNITS: **US** **METRIC**

Engine Model	Cat C3.3B
Net Power	70.3 HP
Stroke	4.7 in
Rated Net Power - 2,200 rpm - U.S. EPA Tier 4 Final - ISO 9249/EEC 80/1269	70.3 HP
Bore	3.7 in
Displacement	203.0 in ³
Rated Net Power - 2,200 rpm - EU Stage V - ISO 9249/EEC 80/1269	71.5 HP
Gross Power - ISO 14396	74.3 HP

WEIGHTS

Operating Weight	20678.0 lb
------------------	------------

Note (1)	*Minimum Weight is based on rubber tracks, no counterweight, operator, full fuel tank, standard stick, blade and no bucket.
----------	---

Note (2)	**Maximum Weight is based on steel tracks with rubber pads, counterweight, operator, full fuel tank, long stick, blade and no bucket.
----------	---

Maximum Operating Weight with Cab**	20678.0 lb
-------------------------------------	------------

Minimum Operating Weight with Cab*	17960.0 lb
------------------------------------	------------

BLADE

Height	17.0 in
--------	---------

Width - Standard	91.0 in
------------------	---------

Width - Wide	97.0 in
--------------	---------

DIMENSIONS - LONG STICK

Boom Swing - Left	20.0 in
-------------------	---------

Maximum Dig Height	277.0 in
--------------------	----------

Maximum Blade Height	15.0 in
----------------------	---------

Track Belt/Shoe Width	18.0 in
-----------------------	---------

Cab Height	100.0 in
------------	----------

Tail Swing with Counterweight	65.0 in
-------------------------------	---------

O/A Undercarriage Length	113.0 in
--------------------------	----------

Maximum Dump Clearance	200.0 in
------------------------	----------

Transport Height	99.0 in
------------------	---------

Boom Swing - Right	38.0 in
Maximum Blade Depth	16.0 in
Dig Depth	183.0 in
Ground Clearance	14.0 in
Stick Length	93.0 in
Maximum Reach	301.0 in
Maximum Reach - Ground Level	294.0 in
O/A Shipping Length	262.0 in
Boom In Reach	127.0 in
Swing Bearing - Height	30.0 in
O/A Track Width	91.0 in
Tail Swing without Counterweight	57.0 in
Vertical Wall	134.0 in

SWING SYSTEM

Machine Swing Speed	10.6 r/min
Boom Swing - Right	50 degrees
Boom Swing - Left	60 degrees

HYDRAULIC SYSTEM

Digging Force - Bucket	13946.0 lb
Operating Pressure - Travel	4134.0 psi

Operating Pressure - Swing	3626.0 psi
Operating Pressure - Equipment	4134.0 psi
Digging Force - Stick - Long	8032.0 lb
Type	Load Sensing Hydraulics with Variable Displacement Piston Pump
Auxiliary Circuit - Primary - Pressure	4134.0 psi
Auxiliary Circuit - Primary - Flow	35.0 gal/min
Pump Flow at 2,400 rpm	44.0 gal/min
Auxiliary Circuit - Secondary - Flow	9.0 gal/min
Digging Force - Stick - Standard	9509.0 lb
Auxiliary Circuit - Secondary - Pressure	4134.0 psi

DIMENSIONS - STANDARD STICK

Cab Height	100.0 in
Vertical Wall	118.0 in
Boom In Reach	120.0 in
Tail Swing with Counterweight	65.0 in
Boom Swing - Right	38.0 in
Track Belt/Shoe Width	18.0 in
Maximum Reach	281.0 in
Stick Length	72.0 in
Transport Height	98.0 in

Maximum Blade Height	15.0 in
Boom Swing - Left	20.0 in
Maximum Blade Depth	16.0 in
O/A Track Width	91.0 in
Maximum Dig Height	265.0 in
Maximum Dump Clearance	187.0 in
Maximum Reach - Ground Level	274.0 in
Tail Swing without Counterweight	57.0 in
O/A Undercarriage Length	113.0 in
Swing Bearing - Height	30.0 in
Ground Clearance	14.0 in
Dig Depth	162.0 in
O/A Shipping Length	259.0 in

SERVICE REFILL CAPACITIES

Fuel Tank	39.0 gal (US)
Hydraulic System	27.0 gal (US)
Hydraulic Tank	14.0 gal (US)
Cooling System	2.6 gal (US)
Engine Oil	3.0 gal (US)

TRAVEL SYSTEM

Maximum Traction Force - High Speed	6250.0 lb
Ground Pressure - Maximum Weight	6.0 psi
Ground Pressure - Minimum Weight	5.0 psi
Travel Speed - High	3.2 mile/h
Travel Speed - Low	1.9 mile/h
Maximum Traction Force - Low Speed	15175.0 lb
Gradeability - Maximum	30 degrees

WEIGHT INCREASE FROM MINIMUM CONFIGURATION

Steel Tracks with Pads	752.0 lb
Counterweight	552.0 lb
Long Stick	146.0 lb

CERTIFICATION - CAB

Top Guard	ISO 10262:1998 (Level II)
Roll Over Protective Structure (ROPS)	ISO 12117-2:2008
Tip Over Protective Structure (TOPS)	ISO 12117:1997

AIR CONDITIONING SYSTEM

Air Conditioning	The air conditioning system on this machine contains the fluorinated greenhouse gas refrigerant R134a (Global Warming Potential = 1430). The system contains 1.0 kg of refrigerant which has a CO2 equivalent of 1.430 metric tonnes.
------------------	---

SOUND

Operator Sound Pressure (ISO 6396:2008)

72.0 dB(A)

Note

European Union Directive "2000/14/EC"

Average Exterior Sound Pressure (ISO 6395:2008)

99.0 dB(A)
